

**\* LEGEND \***

- STONE WALL
- FENCE
- IRON PIN
- MERESTONE
- TO BE SET
- LEDGE OR ROCK
- EXISTING CONTOUR
- PROPOSED CONTOUR
- UTILITY POLE
- TEST HOLE
- PERC TEST
- SILT FENCE
- HAY BALES

C D.S.1  
 I 18°38'05" LT  
 Ic 18°38'05"  
 Da 13°28'53"  
 CD S 36°39'11" E  
 T 69.73 FT  
 R 425.00 FT  
 L 138.23 FT  
 LC 137.62 FT  
 E 5.88 FT  
 M 5.61 FT

C21  
 I 03°29'31" RT  
 Ic 03°29'31"  
 Da 13°28'53"  
 CD N 25°35'23" W  
 T 12.96 FT  
 R 425.00 FT  
 L 25.90 FT  
 LC 25.90 FT  
 E 0.20 FT  
 M 0.20 FT

L20  
 S 21°04'00" E  
 15.84 FT

C18  
 I 08°19'51" LT  
 Ic 08°19'51"  
 Da 88°08'50"  
 CD N 32°30'03" W  
 T 4.73 FT  
 R 65.00 FT  
 L 9.45 FT  
 LC 9.44 FT  
 E 0.17 FT  
 M 0.17 FT

C17  
 I 53°50'09" LT  
 Ic 53°50'09"  
 Da 88°08'50"  
 CD N 01°25'03" W  
 T 33.00 FT  
 R 65.00 FT  
 L 61.07 FT  
 LC 58.85 FT  
 E 7.90 FT  
 M 7.04 FT

C16  
 I 47°52'48" LT  
 Ic 47°52'48"  
 Da 88°08'50"  
 CD N 80°40'33" E  
 T 28.86 FT  
 R 65.00 FT  
 L 54.32 FT  
 LC 54.75 FT  
 E 6.12 FT  
 M 5.59 FT

C D.S.2  
 I 31°22'08" LT  
 Ic 31°22'08"  
 Da 88°08'50"  
 CD S 41°11'05" W  
 T 18.25 FT  
 R 65.00 FT  
 L 35.59 FT  
 LC 35.14 FT  
 E 2.51 FT  
 M 2.42 FT

C14  
 I 16°23'06" LT  
 Ic 16°23'06"  
 Da 88°08'50"  
 CD S 19°13'10" E  
 T 9.36 FT  
 R 65.00 FT  
 L 18.59 FT  
 LC 18.53 FT  
 E 0.67 FT  
 M 0.68 FT

C15  
 I 47°50'19" LT  
 Ic 47°50'19"  
 Da 88°08'50"  
 CD N 51°19'53" W  
 T 28.83 FT  
 R 65.00 FT  
 L 54.27 FT  
 LC 52.71 FT  
 E 6.11 FT  
 M 5.58 FT

C EASE. 1  
 I 98°12'48" RT  
 Ic 98°12'48"  
 Da 229°10'59"  
 CD N 81°02'30" W  
 T 28.87 FT  
 R 25.00 FT  
 L 42.85 FT  
 LC 37.80 FT  
 E 13.19 FT  
 M 8.63 FT

C EASE.  
 I 14°28'22" RT  
 Ic 14°28'22"  
 Da 15°16'44"  
 CD S 38°44'03" E  
 T 47.62 FT  
 R 375.00 FT  
 L 94.72 FT  
 LC 94.47 FT  
 E 3.01 FT  
 M 2.99 FT

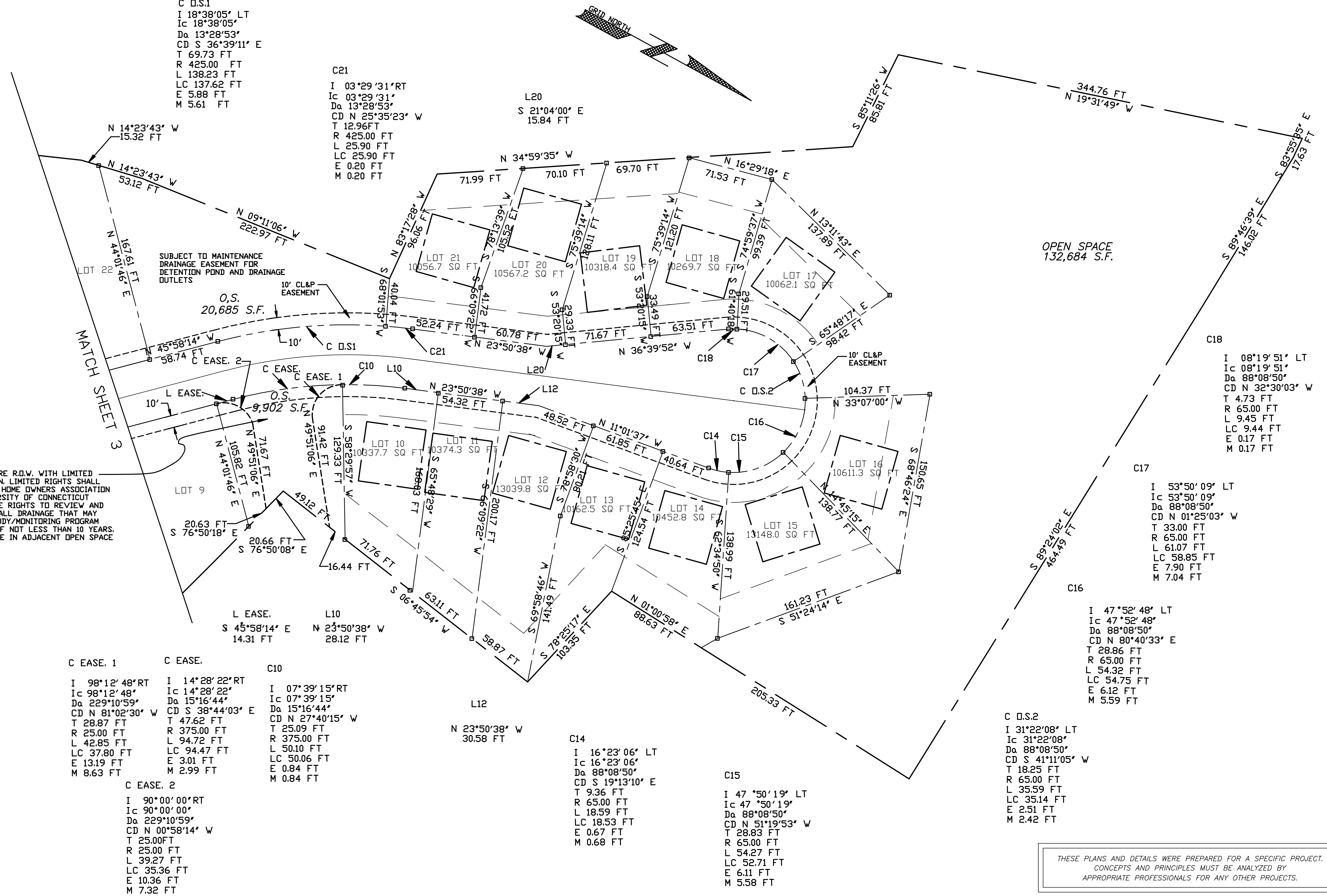
C10  
 I 07°39'15" RT  
 Ic 07°39'15"  
 Da 15°16'44"  
 CD N 27°40'15" W  
 T 25.09 FT  
 R 375.00 FT  
 L 50.10 FT  
 LC 50.06 FT  
 E 0.84 FT  
 M 0.84 FT

C EASE. 2  
 I 90°00'00" RT  
 Ic 90°00'00"  
 Da 229°10'59"  
 CD N 00°58'14" W  
 T 25.00 FT  
 R 25.00 FT  
 L 39.27 FT  
 LC 35.36 FT  
 E 10.36 FT  
 M 7.32 FT

RESERVED FUTURE R.O.W. WITH LIMITED RIGHTS TO DRAIN. LIMITED RIGHTS SHALL MEAN THAT THE HOME OWNERS ASSOCIATION AND THE UNIVERSITY OF CONNECTICUT SHALL HAVE THE RIGHTS TO REVIEW AND LIMIT ANY AND ALL DRAINAGE THAT MAY AFFECT THE STUDY/MONITORING PROGRAM FOR A PERIOD OF NOT LESS THAN 10 YEARS. RIGHTS TO GRADE IN ADJACENT OPEN SPACE

SUBJECT TO MAINTENANCE DRAINAGE EASEMENT FOR DETENTION POND AND DRAINAGE OUTLETS

OPEN SPACE  
 132,684 S.F.



THESE PLANS AND DETAILS WERE PREPARED FOR A SPECIFIC PROJECT. CONCEPTS AND PRINCIPLES MUST BE ANALYZED BY APPROPRIATE PROFESSIONALS FOR ANY OTHER PROJECTS.

DATE	REVISION
2/13/97	GRID NORTH
3/6/97	MERESTONE
6/13/97	FUTURE R.O.W.
10/6/97	CL&P EASEMENTS

**LOT LAYOUT - "BMP - STUDY"**  
 GLEN BROOK GREEN, JORDAN COVE URBAN WATERSHED  
 SEC.319 NATIONAL MONITORING PROGRAM PROJECT

25 FOG PLAIN ROAD WATERFORD, CONNECTICUT

SHEET: 4 OF 14  
 SCALE: 1" = 40'  
 DATE: OCT. 21, 1996

**D.W. GERWICK ENGINEERING**  
 P.O. BOX 539  
 WATERFORD, CONNECTICUT  
 203-442-2201 JN 95 - 133  
 DWGTTL:95133LT2