



## The Center for Land Use Education and Research

Integrating research, education, training and outreach to help Connecticut decision makers plan their communities

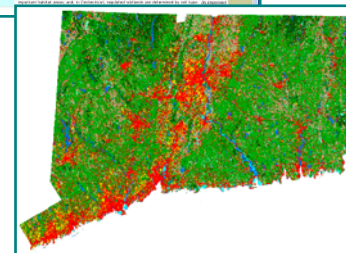
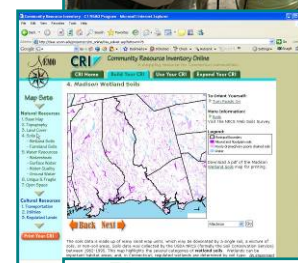
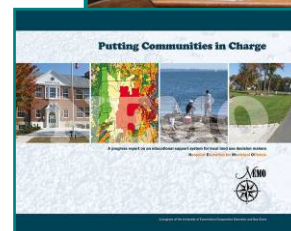
### Communities in Connecticut are in great need of assistance.

Topics like sprawl, smart growth, open space and farmland protection, and economic development are continually debated throughout Connecticut, from town halls to the State Legislature. Local land use decision makers are on the front lines of these debates, but municipal land use commissioners have few resources to assist them as they struggle with these complex issues.

### The University of Connecticut Center for Land use Education and Research (CLEAR) is providing research, training, tools and education to assist local land use decision makers.

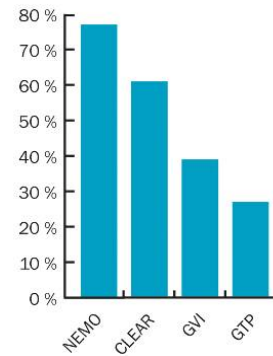
CLEAR is the state's leading provider of cutting-edge land cover research, integrated with tool development, technical training, and in-community Extension education. Communities across the state are making changes to their plans, regulations, and practices, supported by CLEAR information and education.

- CLEAR outreach programs conduct over **150 workshops per year in the community**, on a range of topics related to planning, environmental protection and development.
- Connecticut communities working with CLEAR have made **changes to their land use plans, regulations, and policies**, as documented in the national award-winning NEMO report *Putting Communities in Charge*.
- CLEAR works closely with the Office of Policy and Management, Department of Environmental Protection and other agencies, **playing a key role in state initiatives** such as responsible growth, landscape stewardship, and information technology.
- CLEAR technical training programs have **trained over 500 town and state employees on the use of geospatial technologies** like geographic information systems (GIS) and global positioning systems (GPS).
- CLEAR conducts **cutting-edge research in landscape analysis and change**, including forest fragmentation, urban growth, impervious surface analysis, nonpoint source pollution modeling, invasive species monitoring, sea level rise and coastal inundation, and many other natural resources areas.
- An average of **4800 unique visitors per month access CLEAR research and tools** over the web, and over **7000 visitors per month access CLEAR outreach program websites**.
- **CLEAR leads a national network of land use education programs in 31 states**, and CLEAR technical and web tools are being adapted around the nation for use by other universities.



In addition to its impact at the community level, CLEAR is recognized within the University, across the state, and nationally.

- CLEAR and its component programs enjoy **wide recognition from local officials** around the state (chart, right).
- CLEAR research has been **praised by the Hartford Courant** (box) and is routinely used by hundreds of organizations, agencies and towns.
- CLEAR programs are national innovators and in the past five years have won **national awards** from the American Planning Association, USDA, the Renewable Natural Resources Foundation, and the American Society for Photogrammetry and Remote Sensing.
- CLEAR has won several prestigious **UConn awards**:
  - Chancellor’s Information Technology Award (to NEMO) (1999)
  - Environmental Leadership Award (to CLEAR) (2005)
  - Provost’s Award for Outreach and Engagement (to NEMO) (2006)

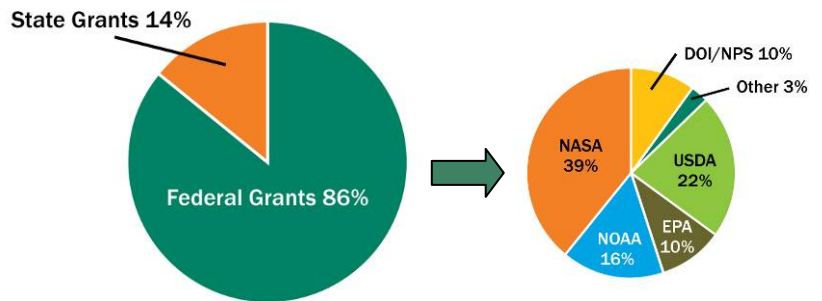


Percentage of responding towns that had heard of these CLEAR programs (statewide survey conducted 2005)

**From The Hartford Courant Editorial Page, March 22, 2004**  
*“Sprawl seems to be Topic A in Connecticut these days... So it is timely that policy-makers have an important tool to sharpen the conversation --computer maps made available by the **University of Connecticut's Center for Land use Education and Research (CLEAR)**...The maps demonstrate as no words or numbers can the pace and type of change in the state with a reputation for stasis... **The maps speak louder than an army of “smart growth” advocates** for the benefits of regional planning and property tax reform in protecting the environment, economy and quality of life. **For its visionary work, [CLEAR] is owed the state's gratitude...**”*

**CLEAR Funding**

Extramural grants support about 80% of CLEAR faculty and staff and their endeavors (chart, below). **Grants during 2002 - 2008 totaled over \$9 million**, with about 14% coming from state agencies and about 86% coming from federal agencies (diagram, left). CLEAR federal grants come from a number of agencies; NASA and USDA were the largest grantors during this period (diagram, right).



CLEAR Program	Tenured faculty	Grant-funded faculty/staff	Total faculty/staff
LERIS remote sensing lab	1.0	3.0	4.0
Geospatial Technology Program (GTP)	0.0	2.5	2.5
NEMO	0.5	4.0	4.5
National NEMO Network	0.5	2.0	2.5
Land Use Planning/Land Use Academy	1.0	1.5	2.5
Green Valley Institute (GVI)	0.5	3.0	3.5
Extension Forestry	1.5	1.5	3.0
<b>Totals</b>	<b>5.0</b>	<b>17.5</b>	<b>22.5</b>